

2018 LOOKBOOK
ENGINEERED HARDWOOD FLOORING



BBL FLOOR
Bring Best Life

Jiangsu Beier Decoration Materials Co., Ltd.
No.999,Chaoyang Road,Henglin,Wujin,Changzhou,JS213101,CHINA
E-mail: info@bbfloor.com
Web: www.bbflooring.com

BBL
Bring Best Life



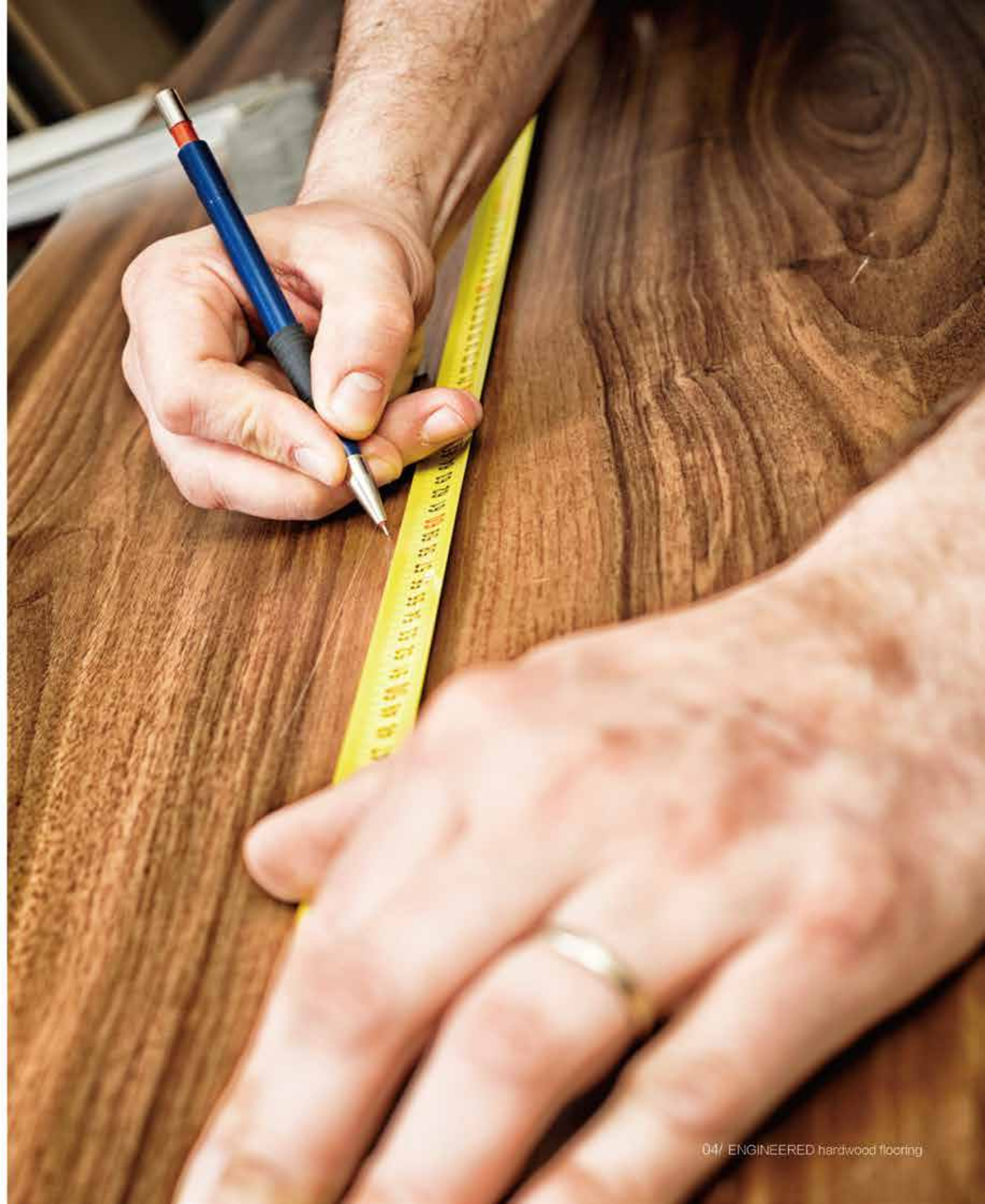
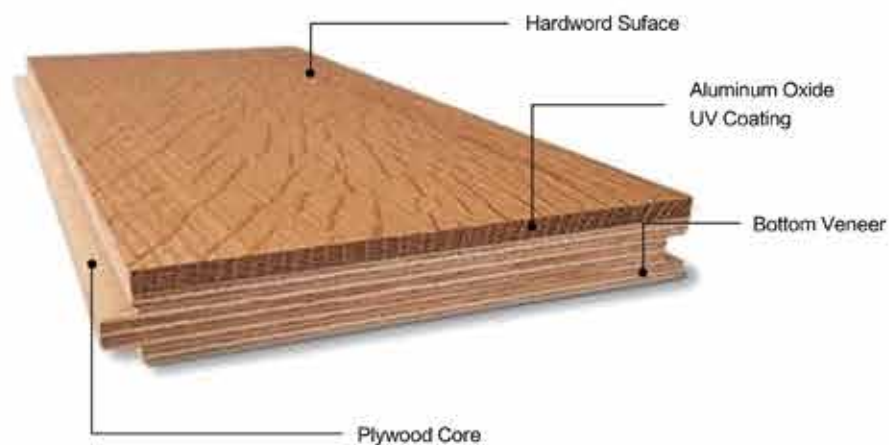
PRODUCT ADVANTAGE

- Realwood design, non-repeat pattern, Natural
- Easy installation, Minimal floor prep, no need keel
- Good characteristic for heated floor adaptive
- Cross grain configuration, make floor resistant to shrinking and expansion, more stable
- Realwood design, non-repeat pattern, 2mm venner could be reused after polishing and painting



INTRODUCTION

Engineered flooring lets you bring the beauty and warmth of hardwood into all areas of your home. It looks like solid hardwood because it is! But underneath, it's "engineered" to allow the wood to naturally contract and expand. That means it can be installed virtually everywhere, even in high-moisture areas like basements and over concrete!



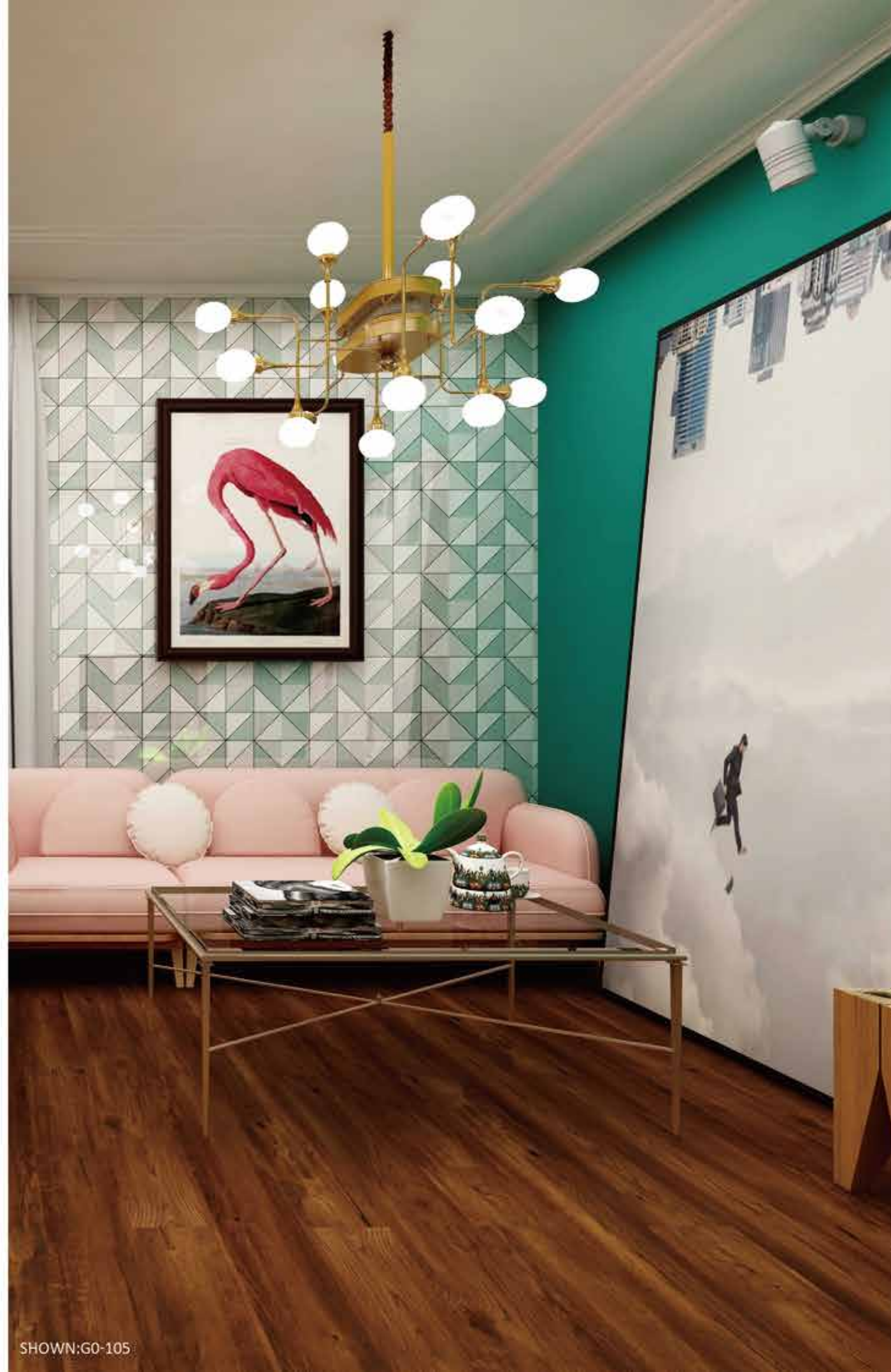
WATERBORNE GLAZE CURED FINISH

Waterborne Glaze cured finish is a newly launched technologies, which captures not only the organic, realistic look and feel, but the unparalleled colorfast function;

It permeates into the wood grain with carefully applied staining by hand, adjusting the different color tunes which make the flooring more vertical and realistic, especially for the hand craft surface treatment;

Waterborne Glaze cured finish function better in resistance of color to fading or running, resulting in the best durability and color protection.

Style, aesthetic, performance: Engineered hardwood flooring at its finest.



SHOWN:G0-105



GH-104



GH-106



G0-103



G0-105

ANTIGUA collection

PRODUCT specification

- 3/4"thickness*7.5"wide,75% 7' lengths with balance random lengths (19*190*2200mm)
- Rustic grading with natural looking
- 2mm American Hickory wear layer
- Slight micro-bevel at edges
- 8 coats of high performance aluminum oxide with Waterborne Glaze cured finish
- Open grain texture





SHOWN: G0-102

ANTIGUA collection

PRODUCT specification

- 3/4"thickness*7.5"wide,75% 6' lengths with balance random lengths (18*190*1900mm)
- Rustic grading with natural looking
- 3mm French Oak wear layer
- Slight micro-bevel at edges
- 8 coats of high performance aluminum oxide with Waterborne Glaze cured finish
- Open grain texture



G0-101



G0-102



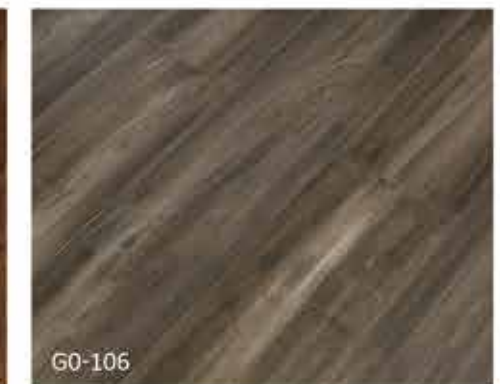
G0-103



G0-104



G0-105



G0-106

CASTLE collection

PRODUCT specification

- 3/5"thickness*7.5"wide,75% 6' lengths with balance random lengths (14*190*1900mm)
- Rustic grading with natural looking
- 3mm Chinese Maple wear layer
- Slight micro-bevel at edges
- With hand craft
- Open grain texture



CASTLE collection

PRODUCT specification

- 4/5"thickness*8.5"wide,75% 7' lengths with balance random lengths (20*220*2200mm)
- Rustic grading with natural looking
- 6mm French Oak wear layer
- Slight micro-bevel at edges
- With Wire Brush craft
- Open grain texture



CASTLE collection

PRODUCT specification

- 3/5"thickness*7.5"wide,75% 6' lengths with balance random lengths (15*190*1900mm)
- Rustic grading with natural looking
- 4mm French Oak wear layer
- Slight micro-bevel at edges
- With Brushed and Smoked or Chemical Treatment crafts
- Open grain texture



GC9A3836



GC9A3850



GC9A3862



GC9A3872



GC9A3882



GC9A3895



GC9A3908



GC9A3918



GC9A3927



GC9A3938



GC9A3948



GC9A3964



GC9A3965



GC9A3979



GC9A3979



GC9A4007



STREET FIVE

CLASSIC collection



PRODUCT specification

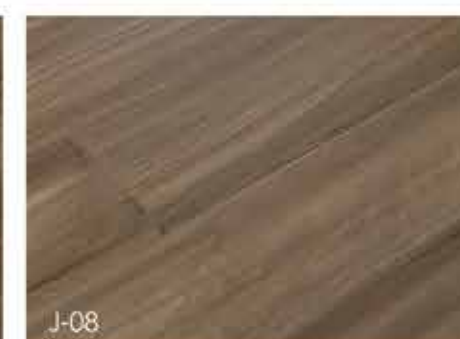
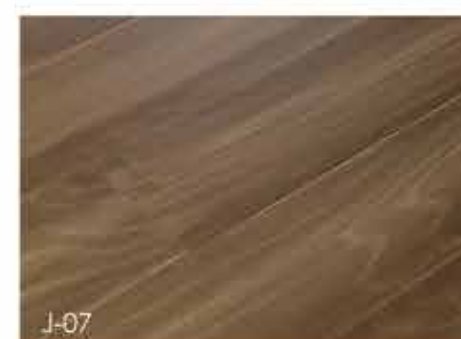
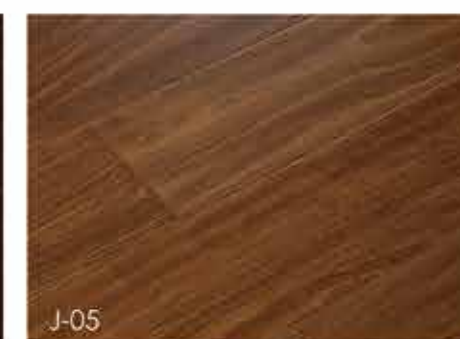
- 3/5"thickness*3.0"wide,75% 17.7"lengths with balance random lengths (15*75*450mm)
- Selected grading
- 1.2mm Oak wear layer
- Slight micro-bevel at edges
- With Smooth craft
- Open grain texture



CLASSIC collection

PRODUCT specification

- 3/5"thickness*6.5"wide,75% 4' lengths with balance random lengths (15*167*1225mm)
- Selected grading
- 1mm German Beech wear layer
- Slight micro-bevel at edges
- With Handscraped craft
- Open grain texture, Demin texture included



CLASSIC collection

RED OAK



WHITE OAK



CANADIAN MAPLE



SMALL LEAF ACACIA





3-PLY COLLECTION



3-PLY collection

PRODUCT specification

- 3/8"thickness*5" wide,20% 4' lengths with balance random lengths (9*125*1200mm)
- Rustic grading with natural looking
- 1.2mm Oak wear layer
- Slight micro-bevel at edges
- HDF core with Wire Brush craft
- Open grain texture





3-PLY collection

PRODUCT specification

- 3/8" thickness * 5" wide, 75% 4' lengths with balance random lengths (8*127*1200mm)
- Selected grading
- 0.6mm American Walnut wear layer
- Slight micro-bevel at edges
- HDF core with Smooth craft
- Open grain texture





SIMPLEX 2-PLY COLLECTION



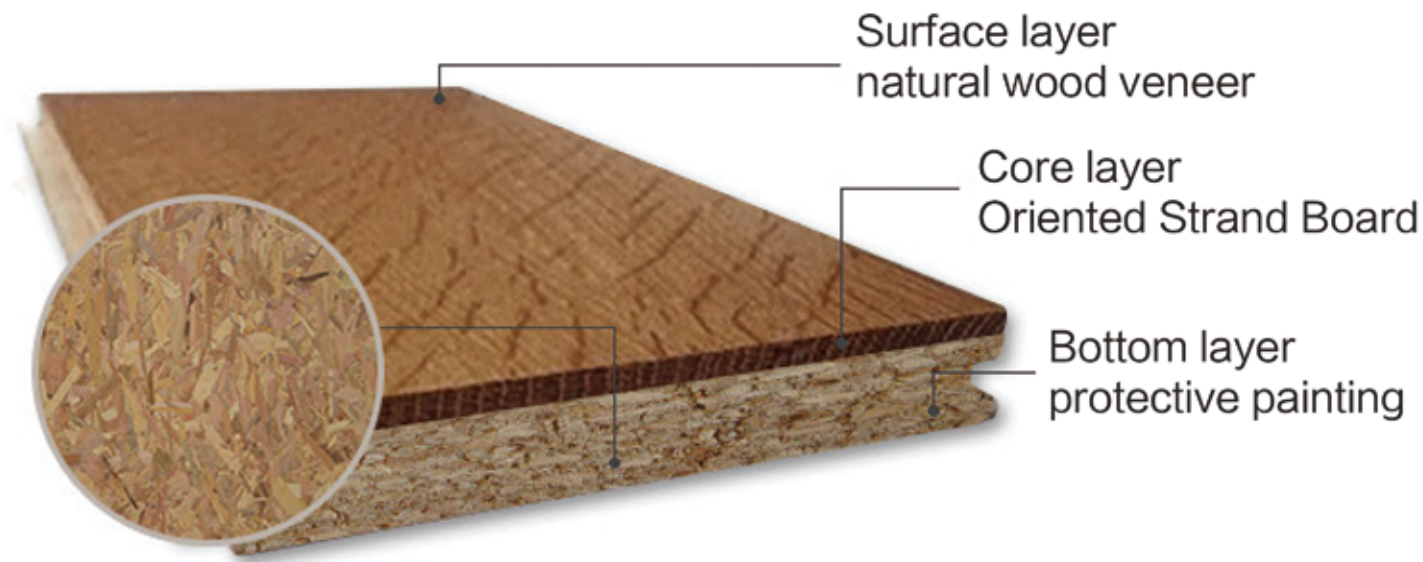
SIMPLEX 2-PLY collection

PRODUCT specification

- 1/2"thickness*7.5"wide,75% 6' lengths with balance random lengths (12*196*1830mm)
- Rustic grading with natural looking
- 0.6mm Oak wear layer
- Slight micro-bevel at edges
- HDF core with Wire Brush craft
- Open grain texture



SIMPLEX 2-PLY COLLECTION



INTRODUCTION:

Oriented Strand Board (OSB) is a technique-mature and environmental-friendly panel, which has already been widely applied as a building and decorating material all over the world. The OSB Wood Floor is the composite floor with the Oriented Strand Board as the core board. Compared with the other wood-based flooring, it has tremendous advantages.



ADVANTAGES:

- Utmost use of Raw Material
- Anti-bacterial & insect resistant after treatment of high temperature drying and hot pressing
- Excellent performance with higher dimensional stability, greater strength, heat insulation, fire resistance, impact resistance etc.
- Easy processing with OSB wood texture structure
- Non-formaldehyde with usage of Isocyanate as adhesives
- No Anti-Dumping or Countervailing Duty

As a kind of green-material, OSB offers protection of forest resources and facilitate of more environmentally friendly living condition with zero-formaldehyde release which is also what the market looks for. OSB Floor will surely become one of the most promising wood-based panel in the future. Choose OSB Floor, Start Low-carbon Life !



SHOWN: UBUD

SIMPLEX 2-PLY collection

PRODUCT specification

- 5/8" thickness * 7.5" wide, 75% 6' lengths with balance random lengths (16*190*1900mm)
- Rustic grading with natural looking
- 4mm French Oak wear layer
- Slight micro-bevel at edges
- OSB core with Wire Brush craft
- Open grain texture



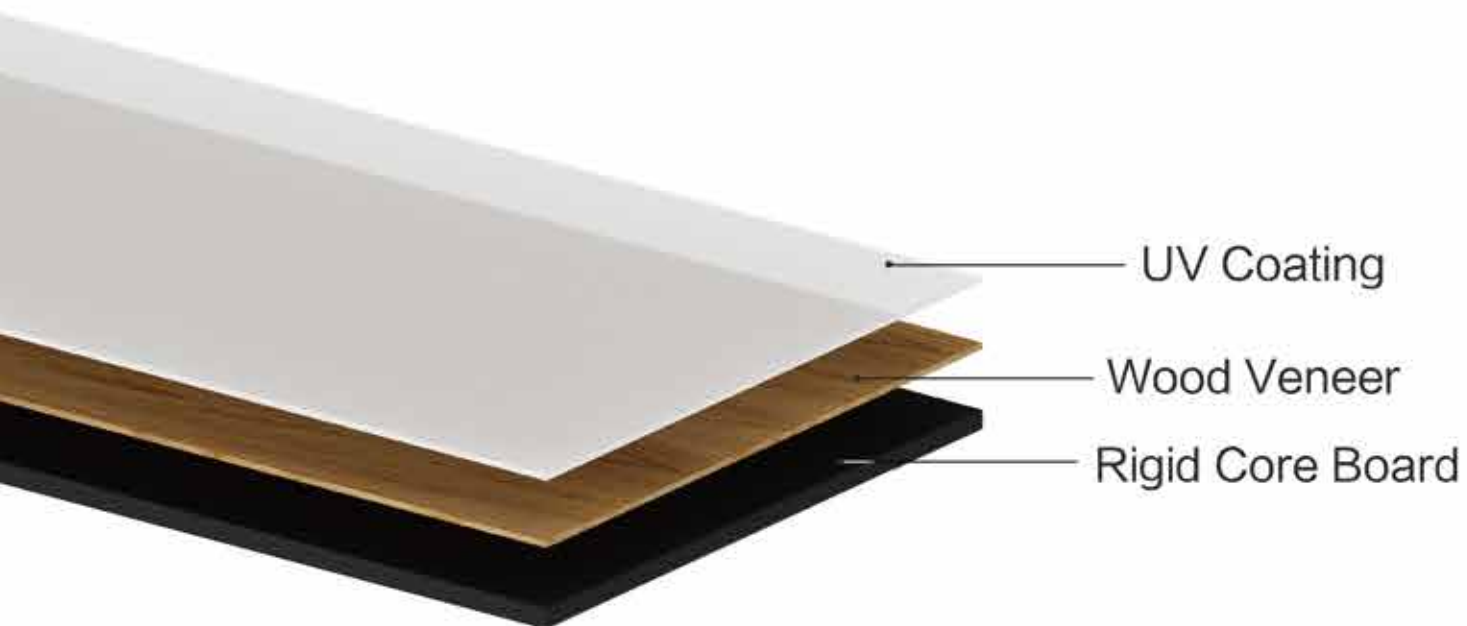
KUTA



UBUD



SIMPLEX 2-PLY COLLECTION



INTRODUCTION:

Simplex wood flooring ---rigid core board +wood veneer

We change the traditional construction of Engineered hardwood flooring, combining best-selling rigid core board with real wood veneer, it inherits the advantages of rigid core board: Stable、Waterproof、Cost-efficient, while maintaining the advantages of Engineered hardwood flooring.

With the veneer of Engineered hardwood flooring, clear texture and excellent surface treatment, that looks more realistic, you can enjoy the great feet sense.

Similarly, we also guarantee the stability, Maximize the strengths of both.

PRODUCT specification

- 3/8" thickness*5"wide*35.8"fixed length (8*130*910mm)
- Rustic grading with natural looking
- 1.2mm oak wood veneer wear layer
- Slight micro-bevel at edges
- Rigid core board
- Open grain texture

